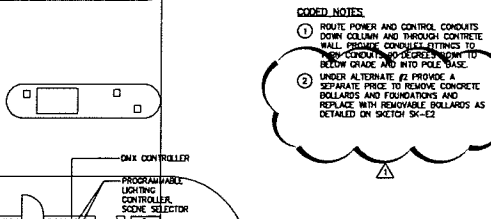




LIGHT FIXTURE SCHEDULE						
FEATURE DESIGNATION	TYPE	DESCRIPTION	MOUNTING	LAMPS	VOLTS	VATTAGE (W)
L1	LED	MULTI-LAMP (50mm SPACING) ROBNW SHATTERPROOF EXTERIOR RATED 7-WIRE DMX CONTROLLED LINEAR CABLE MOUNTED FESTOON LIGHTING	CATEGORY CABLE	LED ROBNW	120 / 24VDC	1.0W EACH LAMP
L2	LED	6" DIA. ADJUSTABLE AMHRS ROB DOWN LIGHT	CATEGORY CABLE	LED ROB	120/277	35W
SL1	LED	CUSTOM TILT POLE WITH FLUSH MOUNTED DUAL LED STRIP LIGHTING, ONE ROB COLOR CHANGING AND ONE WHITE (3000K) LINEAR STRIP LIGHTING. CATEGORY CABLE MOUNTING BRACKET AT POLE TOP AND CHAMFERED POLE TOP. POLE BASE TO HAVE (2) QT DUPLEX RECEPTABLES WITH IN-USE COVERPLATES. POLE FINISH TO BE FROM MANUFACTURER'S STANDARD METAL FINISHES.	POLE	LED WHITE 3500K & ROB	120	26W

GENERAL NOTES: PRIOR TO ORDERING THE LIGHT FIXTURES CONTRACTOR IS TO VERIFY EXACT LENGTHS REQUIRED BETWEEN POLES.



CODED NOTES

- ROUTE POWER AND CONTROL CONDUITS DOWN COLUMN AND THROUGH CONCRETE WALL. PROVIDE CONDUIT-FITTINGS TO NEW CONDUIT AND DECREASES TO GO TO BELOW GRADE AND INTO POLE BASE.
- UNDER ALTERNATE #2 PROVIDE A SEPARATE PRICE TO REMOVE CONCRETE BOLLARDS AND FOUNDATIONS AND REPLACE WITH REMOVABLE BOLLARDS AS DETAILED ON SKETCH 51-62.



THIS IS A PRELIMINARY DRAWING. IT IS SUBJECT TO CHANGE WITHOUT NOTICE. THE CONTRACTOR SHALL BE RESPONSIBLE FOR VERIFYING ALL DIMENSIONS AND CONDITIONS ON THE JOB SITE PRIOR TO COMMENCING WORK. THE CONTRACTOR SHALL BE RESPONSIBLE FOR OBTAINING ALL NECESSARY PERMITS AND APPROVALS FROM THE CITY OF ALBANY AND THE BUSINESS IMPROVEMENT DISTRICT. THE CONTRACTOR SHALL BE RESPONSIBLE FOR PROTECTING ALL EXISTING UTILITIES AND STRUCTURES. THE CONTRACTOR SHALL BE RESPONSIBLE FOR MAINTAINING ACCESS TO ALL ADJACENT PROPERTIES AT ALL TIMES. THE CONTRACTOR SHALL BE RESPONSIBLE FOR CLEANING UP ALL DEBRIS AND RESTORING THE SITE TO ORIGINAL CONDITION OR BETTER. THE CONTRACTOR SHALL BE RESPONSIBLE FOR OBTAINING ALL NECESSARY INSURANCE AND BONDING. THE CONTRACTOR SHALL BE RESPONSIBLE FOR NOTIFYING THE CITY OF ALBANY AND THE BUSINESS IMPROVEMENT DISTRICT OF ANY CHANGES TO THE WORK. THE CONTRACTOR SHALL BE RESPONSIBLE FOR PROVIDING ALL NECESSARY MATERIALS AND LABOR. THE CONTRACTOR SHALL BE RESPONSIBLE FOR COMPLETING THE WORK WITHIN THE SPECIFIED TIME FRAME. THE CONTRACTOR SHALL BE RESPONSIBLE FOR OBTAINING ALL NECESSARY APPROVALS FROM THE CITY OF ALBANY AND THE BUSINESS IMPROVEMENT DISTRICT. THE CONTRACTOR SHALL BE RESPONSIBLE FOR MAINTAINING ACCESS TO ALL ADJACENT PROPERTIES AT ALL TIMES. THE CONTRACTOR SHALL BE RESPONSIBLE FOR CLEANING UP ALL DEBRIS AND RESTORING THE SITE TO ORIGINAL CONDITION OR BETTER. THE CONTRACTOR SHALL BE RESPONSIBLE FOR OBTAINING ALL NECESSARY INSURANCE AND BONDING. THE CONTRACTOR SHALL BE RESPONSIBLE FOR NOTIFYING THE CITY OF ALBANY AND THE BUSINESS IMPROVEMENT DISTRICT OF ANY CHANGES TO THE WORK. THE CONTRACTOR SHALL BE RESPONSIBLE FOR PROVIDING ALL NECESSARY MATERIALS AND LABOR. THE CONTRACTOR SHALL BE RESPONSIBLE FOR COMPLETING THE WORK WITHIN THE SPECIFIED TIME FRAME.

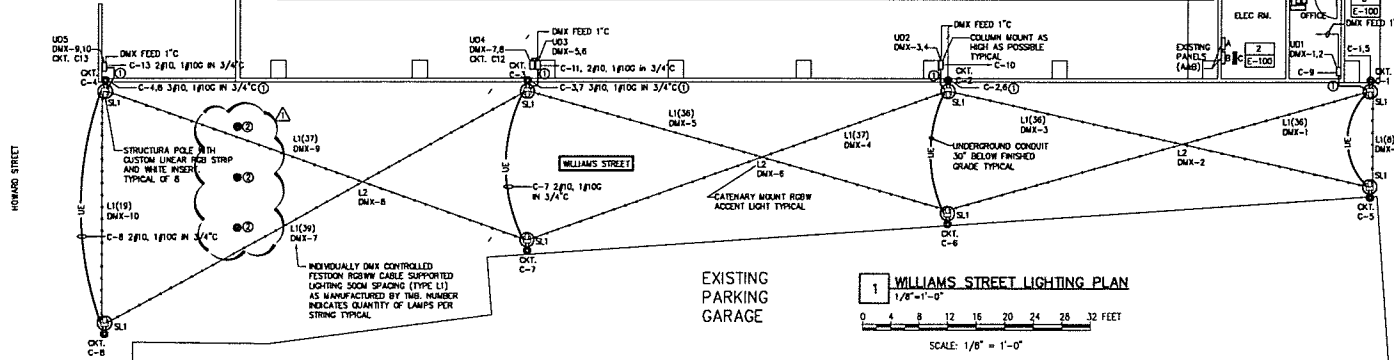
DOWNTOWN ALBANY
BUSINESS IMPROVEMENT DISTRICT
21 LODGE STREET
ALBANY, NY 12207

No.	Submittal	Revision	App'd	By	Date
1	ADDENDUM #1		JK	MDA	6/13/18
2	ISSUE FOR BID		JK	MDA	5/23/18

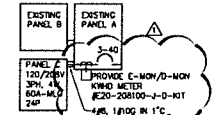
WILLIAM STREET LIGHTING

Designed By: MDA
Drawn By: MDA/JWF
Checked By: JK
Issue Date: 2/14/2018
Project No: 18119
Scale: AS NOTED

Drawing No.: **E-001**



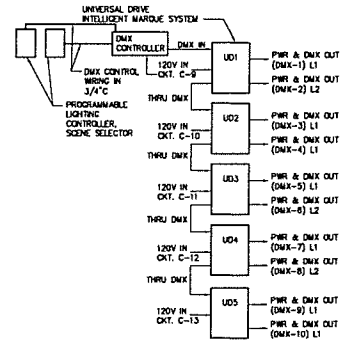
1 WILLIAMS STREET LIGHTING PLAN
1/8" = 1'-0"



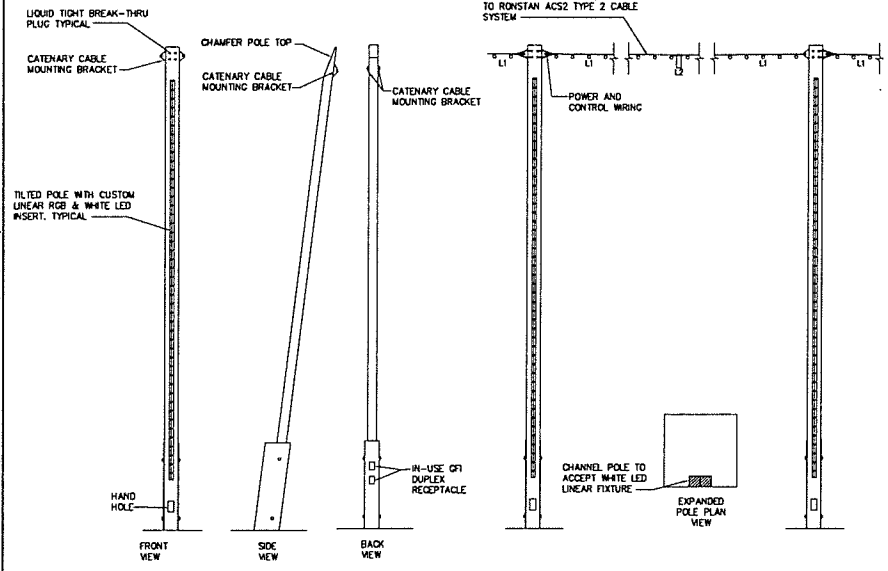
NOTE:

- DISCONNECT AND REMOVE EXISTING 1P-20AMP BRANCH BREAKERS FROM PANEL "A" POSITIONS 26,28,30 AND REPLACE WITH A 3P-40AMP BRANCH BREAKER. BREAKER SHALL BE SUITABLE FOR INSTALLATION IN A SOLID BODY PANELBOARD. PULL BACK EXISTING BRANCH CIRCUIT WIRING SPICE AND EXTEND TO NEW PANEL "C" AND CONNECT TO 1P-20AMP BRANCH BREAKERS AT POSITIONS, 14, 18 & 19.
- PROVIDE PANELBOARD "C" RATED 60AMP MLO, 120/208V, 3PH, 4W, 24 POLE, 22KALC. PROVIDE WITH 20 1P-20AMP BRANCH BREAKERS. MOUNT PANEL BELOW PANEL "B".

2 PARTIAL ONE LINE DIAGRAM
NONE



5 LIGHTING CONTROL ONE LINE
NONE



3 POLE DETAILS
NONE

4 LIGHT POLE BASE DETAIL
NONE

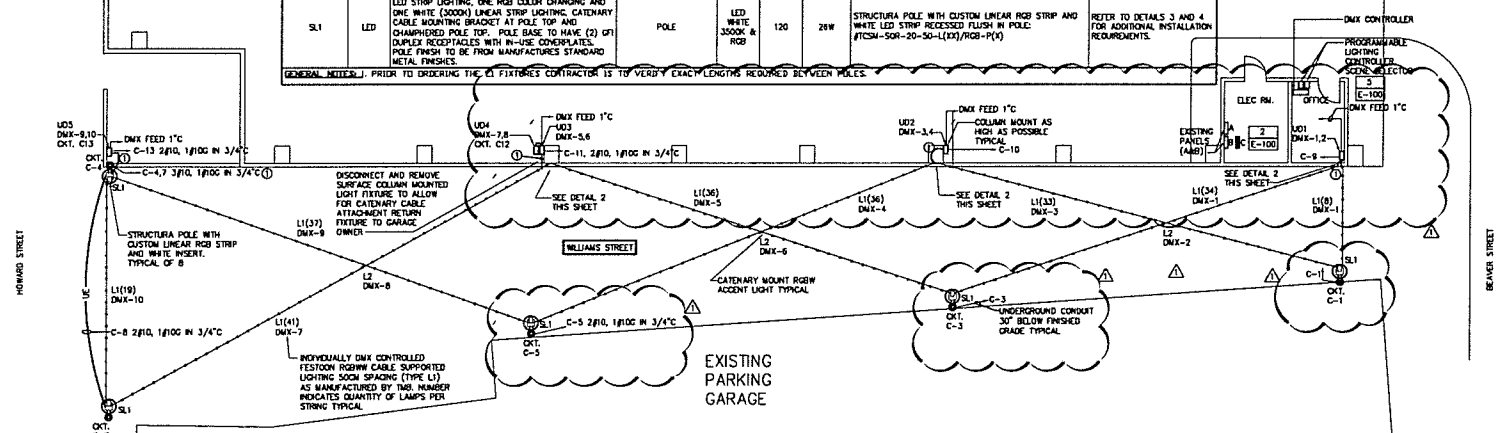
THE USER SHALL BE RESPONSIBLE FOR VERIFYING ALL DIMENSIONS AND CONDITIONS ON THE JOB SITE PRIOR TO COMMENCING WORK. THE CONTRACTOR SHALL BE RESPONSIBLE FOR OBTAINING ALL NECESSARY PERMITS AND APPROVALS FROM THE CITY OF ALBANY AND THE BUSINESS IMPROVEMENT DISTRICT. THE CONTRACTOR SHALL BE RESPONSIBLE FOR PROTECTING ALL EXISTING UTILITIES AND STRUCTURES. THE CONTRACTOR SHALL BE RESPONSIBLE FOR MAINTAINING ACCESS TO ALL ADJACENT PROPERTIES AT ALL TIMES. THE CONTRACTOR SHALL BE RESPONSIBLE FOR CLEANING UP ALL DEBRIS AND RESTORING THE SITE TO ORIGINAL CONDITION OR BETTER. THE CONTRACTOR SHALL BE RESPONSIBLE FOR OBTAINING ALL NECESSARY INSURANCE AND BONDING. THE CONTRACTOR SHALL BE RESPONSIBLE FOR NOTIFYING THE CITY OF ALBANY AND THE BUSINESS IMPROVEMENT DISTRICT OF ANY CHANGES TO THE WORK. THE CONTRACTOR SHALL BE RESPONSIBLE FOR PROVIDING ALL NECESSARY MATERIALS AND LABOR. THE CONTRACTOR SHALL BE RESPONSIBLE FOR COMPLETING THE WORK WITHIN THE SPECIFIED TIME FRAME.

CODED NOTES
 ① ROUTE POWER AND CONTROL CONDUITS ALONG COLUMN TO CATENARY CABLE ANCHORS. PROVIDE HEATED RIGHT CABLE FITTINGS ON ENDS OF CONDUIT FOR CABLE TO PASS THROUGH.

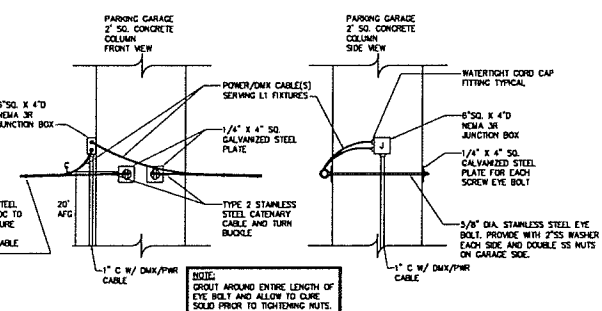


LIGHT FIXTURE SCHEDULE							
FIXTURE DESIGNATION	TYPE	DESCRIPTION	MOUNTING	LAMPS	VOLTS	VARIAGE (%)	MANUFACTURER & CATALOG NUMBER
L1	LED	MULTI-LAMP (50m SPACING) RGBWW SHATTERPROOF EXTERIOR RATED 2-WIRE DMX CONTROLLED LINEAR CABLE MOUNTED FESTOON LIGHTING	CATENARY CABLE	LED RGBWW	120 / 24VDC	1.8W EACH LAMP	TMEL: RGBWW-15CON-S-W-SMCRGBWW-N-SMCRDNNH2A-MEAL-0130K124-W50K24P
L2	LED	6" DIA. ADJUSTABLE ANIMG RGB DOWN LIGHT	CATENARY CABLE	LED RGB	120/277	35W	LUMRESL11W01-35W-120-55A-CAT2-RGB-R45-A360-RG
SL1	LED	CUSTOM TILT POLE WITH FLUSH MOUNTED DUAL LED STRIP LIGHTING, ONE RGB COLOR CHANGING AND ONE WHITE (3000K) LINEAR STRIP LIGHTING. CATENARY CABLE MOUNTING BRACKET AT POLE TOP AND CHAMFERED POLE TOP. POLE BASE TO HAVE (2) GF1 DUPLEX RECEPTACLES WITH IN-USE COVERPLATES. POLE FINISH TO BE FROM MANUFACTURER'S STANDARD METAL FINISHES.	POLE	LED WHITE 3500K & RGB	120	28W	STRUCTURA POLE WITH CUSTOM LINEAR RGB STRIP AND WHITE LED STRIP RECESSED FLUSH IN POLE: #TCSM-50R-20-50-L1(103)/RGB-P(4)

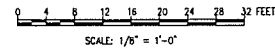
GENERAL NOTES: PRIOR TO ORDERING THE LIGHT FIXTURES CONTRACTOR IS TO VERIFY EXACT LENGTHS REQUIRED BETWEEN POLES.



1 WILLIAMS STREET LIGHTING PLAN
 1/8"=1'-0"



2 COLUMN CATENARY CABLE MOUNTING DETAIL
 SCALE: NONE



FILE: W:\PROJECTS\WMAVIA\DATA\LOADS\CAD\DWG\WILLIAMS STREET LIGHTING OPTION A.DWG
 DATE: 2/22/2018 10:52:21 AM USER: JLM PROJECT: WMAVIA 2018 10:52:21 AM

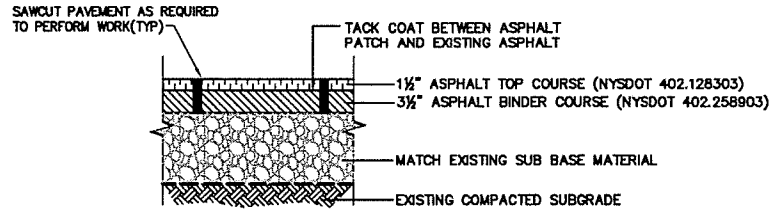
DOWNTOWN ALBANY
 BUSINESS IMPROVEMENT DISTRICT
 21 LODGE STREET
 ALBANY, NY 12207

NO.	REVISION / NUMBER	DATE	BY	DATE
1	ADDENDUM #1	JK	MGA	8/13/18
4	ISSUE 1 COR 100	JK	MGA	5/23/18

WILLIAM STREET LIGHTING OPTION A

Designed By: MDA
 Drawn By: MDA/JVF
 Checked By: JK
 Issue Date: 23MAY2018
 Project No: 34118
 Scale: AS NOTED

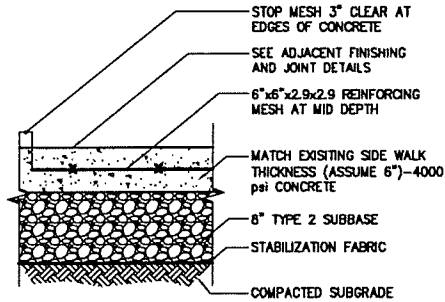
Drawing No:
E-001A



NOTES:

1. ONLY DISTURB ASPHALT PAVEMENT AS REQUIRED TO PERFORM ELECTRICAL WORK. REPLACE PAVEMENT TO THE FULL DEPTH OF EXISTING ASPHALT PAVEMENT.
2. ALL PAVEMENT MARKINGS DISTURBED SHALL BE RESTORED TO THE SATISFACTION OF THE CITY.
3. ALL JOINTS TO BE SEALED WITH ASPHALT EMULSION (AC-20) PER NYS DOT SPECIFICATIONS.

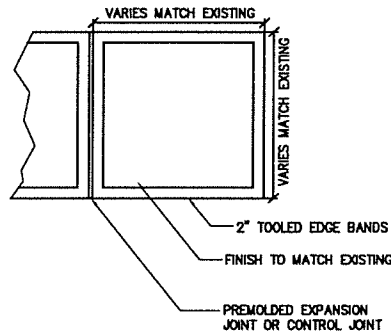
1 ASPHALT PAVEMENT PATCH DETAIL
- NOT TO SCALE



NOTES:

1. EXPANSION JOINTS TO BE PLACED BETWEEN ADJACENT SLABS, AT BUILDING LINE, AT CURBS, OR AT PENETRATING STRUCTURES. MAX. 20'-0" O.C.. (SEE ADJACENT DETAIL)
2. LOCATE CONTROL JOINTS AS SHOWN ON PLAN OR MAX. 5'-0" O.C. ADJUST TIGHT AREAS TO EQUAL SPACING.

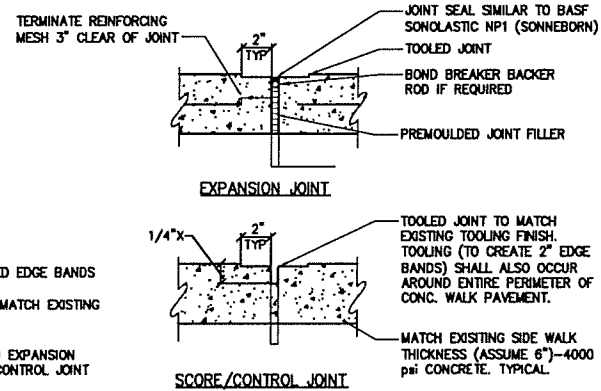
2 CONCRETE SIDEWALK DETAIL
- NOT TO SCALE



NOTES:

1. THE CONCRETE USED SHALL BE PORTLAND CEMENT, AIR-ENTRAINED, CLASS "A" CONCRETE WITH AN AIR CONTENT OF 5%, MIN., TO 7% MAX., AND A SLUMP OF THREE INCHES, MIN., TO FIVE INCHES, MAX.
2. ALL SIDEWALKS SHALL MATCH EXISTING SLOPES AND BE FINISHED WITH A STIFF BROOM FINISH UNLESS DIRECTED OTHERWISE BY THE CITY.
3. EXPANSION JOINTS TO BE PLACED BETWEEN ADJACENT SLABS, AT BUILDING LINE, AT CURBS, OR AT PENETRATING STRUCTURES.

3 CONCRETE SIDEWALK FINISHING AND JOINTS
- NOT TO SCALE



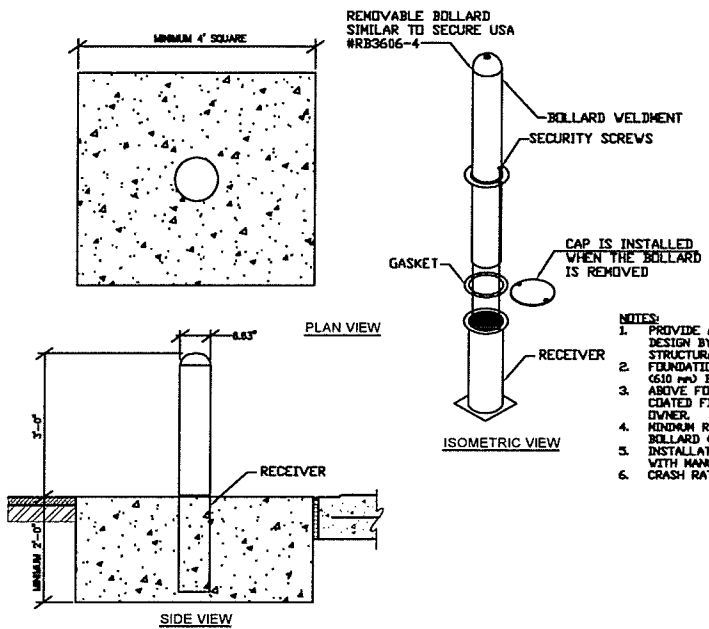
IT IS A VIOLATION OF LAW FOR ANY PERSON, UNLESS THEY ARE LICENSED UNDER THE JURISDICTION OF A LICENSED PROFESSIONAL ENGINEER, ARCHITECT, LANDSCAPE ARCHITECT OR LAND SURVEYOR TO ALTER, MODIFY OR ANY WAY, IF AN INDIVIDUAL OR STAFF OF A LICENSED PROFESSIONAL, IS ALTERED OR ALTERED THEREAFTER, ANY PROJECT, LANDSCAPE ARCHITECT OR LAND SURVEYOR SHALL RETAIN THE DOCUMENT AND INCLUDE THE REVISIONS ALONG WITH FOLLOWING IT UP THROUGHOUT THE DATE OF SUCH ALTERATION AND A SPECIFIC DESCRIPTION OF THE ALTERATION.

No.	Revised/Revised	Issued	By	Date

DOWNTOWN ALBANY
 BUSINESS IMPROVEMENT DISTRICT
 21 LODGE STREET
 ALBANY, NY 12207
 CHA PROJECT No 34149

ASPHALT AND CONCRETE
 SIDEWALK REPAIR DETAILS

Designed By MDA	Project No 34149	Drawing No: SK-E1
Drawn By MDA	Scale NTS	
Checked By JDK	Issue Date 8/13/18	



- NOTES:**
1. PROVIDE A SEALED AND STAMPED FOUNDATION DESIGN BY A NEW YORK STATE PROFESSIONAL STRUCTURAL ENGINEER.
 2. FOUNDATION SHALL EXTEND A MINIMUM OF 2" (51.0 mm) BEYOND THE CENTER LINE OF BOLLARD.
 3. ABOVE FOUNDATION SURFACES ARE POWDER COATED FINISH TO COLOR AS DETERMINED BY OWNER.
 4. MINIMUM REBAR REQUIRED 100 lbs. (45 kg) PER BOLLARD (800 lbs. FOR END CONDITION).
 5. INSTALLATION TO BE COMPLETED IN ACCORDANCE WITH MANUFACTURER'S SPECIFICATIONS.
 6. CRASH RATING 15,000 lbs. @ 30 mph (K30).

- NOTES:**
1. THE CONCRETE USED SHALL BE PORTLAND CEMENT, AIR-ENTRAINED, CLASS "A" CONCRETE WITH AN AIR CONTENT OF 5% MIN., TO 7% MAX., AND A SLUMP OF THREE INCHES, MIN., TO FIVE INCHES, MAX.

1 REMOVABLE BOLLARD DETAIL

- NOT TO SCALE

IT IS A VIOLATION OF LAW FOR ANY PERSON UNLESS THEY ARE ACTING UNDER THE DIRECTION OF A LICENSED PROFESSIONAL ENGINEER, ARCHITECT, LANDSCAPE ARCHITECT OR LAND SURVEYOR TO SEAL OR FILE IN ANY MANNER ANY DRAWING OR STAMP OF A LICENSED PROFESSIONAL IN ALBANY, NEW YORK UNLESS THE ENGINEER, ARCHITECT, LANDSCAPE ARCHITECT OR LAND SURVEYOR SHALL SEAL, STAMP, SIGN AND INCLUDE THE NOTATION "ALTERNATE" FOLLOWED BY THEIR SIGNATURE, THE DATE OF SUCH ALTERNATE, AND A SPECIFIC DESCRIPTION OF THE ALTERNATE.

Rev.	Revised For	By	Date

DOWNTOWN ALBANY
BUSINESS IMPROVEMENT DISTRICT
21 LODGE STREET
ALBANY, NY 12207

CHA PROJECT No. 34149

REMOVABLE BOLLARD
DETAILS
BID ALTERNATE #2

Designed By MDA	Project No. 34149	Drawing No. SK-E2
Drawn By MDA	Scale NTS	
Checked By JCL	Issue Date 04/13/18	