

FOR LEASE - Speak-Easy & Lounge Available

1 Steuben Place, Albany, NY 12207



**\$: 15.00 / SF NNN
2,666 +/- SF**

Property Highlights

- Size: 2,666 +/- SF
- Rent: \$15/SF NNN + \$1.50/SF nets
- Employee Parking: Garage parking available.
- Ceiling Height: 10'
- Zoning: MU-DT
- HVAC: Forced Air/Natural Gas, Central Air
- Water/Sewer: Public

Property Information

Unique speak-easy bar and lounge on the lower level of the Kenmore Apartments w/ the entrance off the cobblestone Steuben Alley. Approximately 2666 SF w/ a beautiful mahogany bar, paneling and wainscoting in the bar room and lounge, plus a larger open event room attached. Ideal for intimate gatherings, wine and spirits-tasting events, paint-and-sip, etc. \$3333/mo rent + \$333/mo nets, Signage opportunity by Steuben entrance. Garage parking available for employees.

William "Felton" McLaughlin | CCIM, SIOR

o: 518 465 1400 Ext. 208

c: 518 428 1164

e: fmclaughlin@naiplatform.com



14 Corporate Woods Blvd, Albany NY, 12211



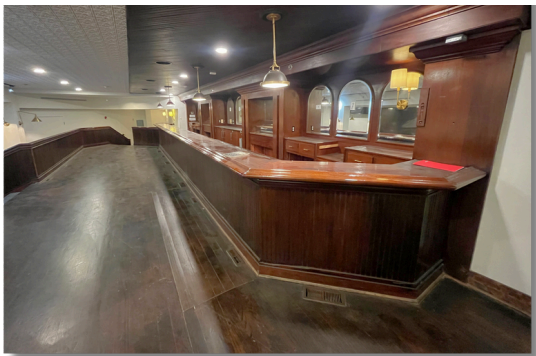
518 465 1400



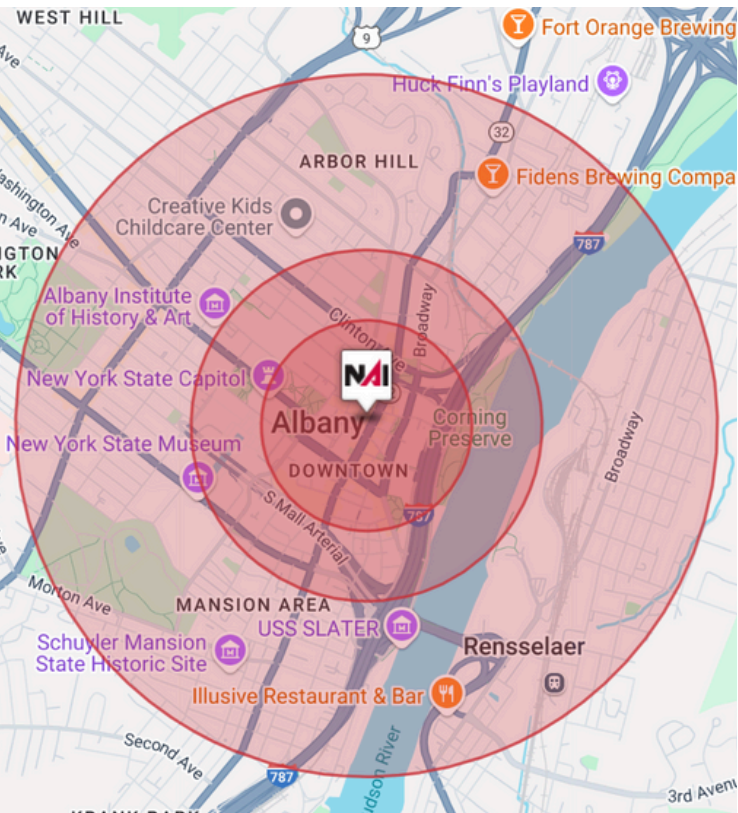
naiplatform.com



Floor Plan



Demographics Of Surrounding Area



	0.3 Miles	0.5 Miles	1 Miles
Total households	862	1,974	12,804
Total population	1,417	3,435	25,293
Population white	43.0%	38.6%	37.3%
Population black	40.0%	43.9%	41.6%
Population hispanic	9.2%	10.3%	12.6%
Population asian	4.9%	4.8%	6.0%
Population pacific islander	0.1%	0.1%	0.1%
Population american indian	0.6%	0.6%	0.6%
Population other	3.8%	4.1%	5.2%
Persons per household	1.6	1.7	2
Average household income	\$79,291	\$79,495	\$66,588
Average house value	\$267,400	\$260,796	\$221,724
Average age	40	39	37
Average age male	41	39	37
Average age female	39	38	37

We obtained the information above from sources we believe to be reliable. However, we have not verified its accuracy and make no guarantee, warranty or representation about it. It is submitted subject to the possibility of errors, omissions, change of price, rental or other conditions, prior sale, lease or financing, or withdrawal without notice. We include projections, opinions, assumptions or estimates for example only, and they may not represent current or future performance of the property. You and your tax and legal advisors should conduct your own investigation of the property and transaction.